

The Past Week with PnF Charting

August 11, 2022



Marcus Aurelius

Aug 11



1



Point & Figure Charts + Targets

“Always run the shortest course, the one laid out by nature. This will enable you to speak and act sensibly; it will free you from bickering and petty ambition; and it will remove your anxieties and affectations.”

- Marcus Aurelius -

Stock Indices

S&P 500 (SPY) is in markup with a minimum target of 2.3% higher from today's price.

SPY SPDR S&P 500 ETF NYSE

11-Aug-2022, 15:19 ET, 60MN, O: 420.14, H: 420.24, L: 419.22, C: 419.87, V: 409531, Chg: -0.26 (-0.06%)

P&F Pattern Ascending Triple Top Breakout on 10-Aug-2022

Scaling: Dynamic [Reversal: 2, ATR(63) Box Size:2.18]

(c) StockCharts.com



Nasdaq (QQQ) is in markup and has fulfilled the minimum target at \$328.04. Price could proceed higher to the upper target, or decide to consolidate further at these levels. Further consolidation could weigh on the other indices as well.

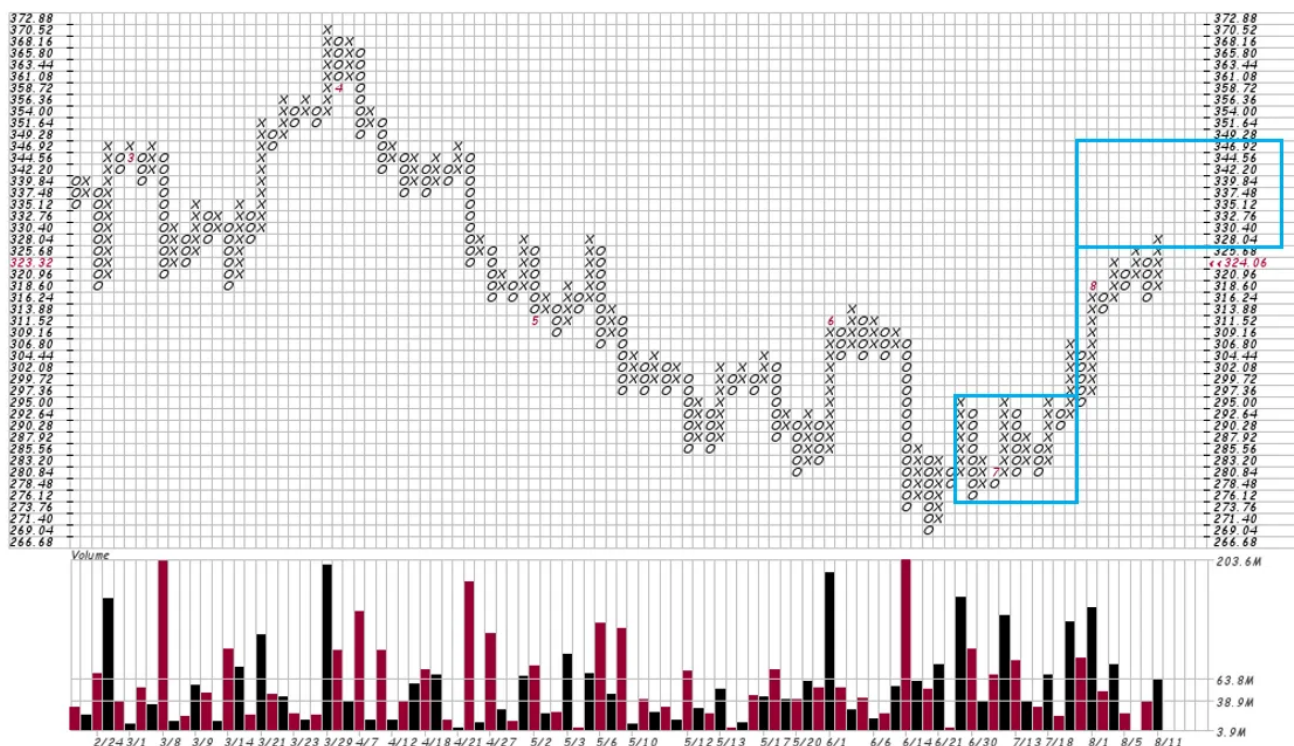
QQQ Invesco QQQ Trust Nasdaq Global Mkt.

11-Aug-2022, 16:00 ET, 60MN, O: 324.16, H: 324.49, L: 323.36, C: 324.06, V: 2899521, Chg: -0.10 (-0.03%)

P&F Pattern Double Top Breakout on 11-Aug-2022

Scaling: Dynamic [Reversal: 2, ATR(63) Box Size:2.36]

(c) StockCharts.com



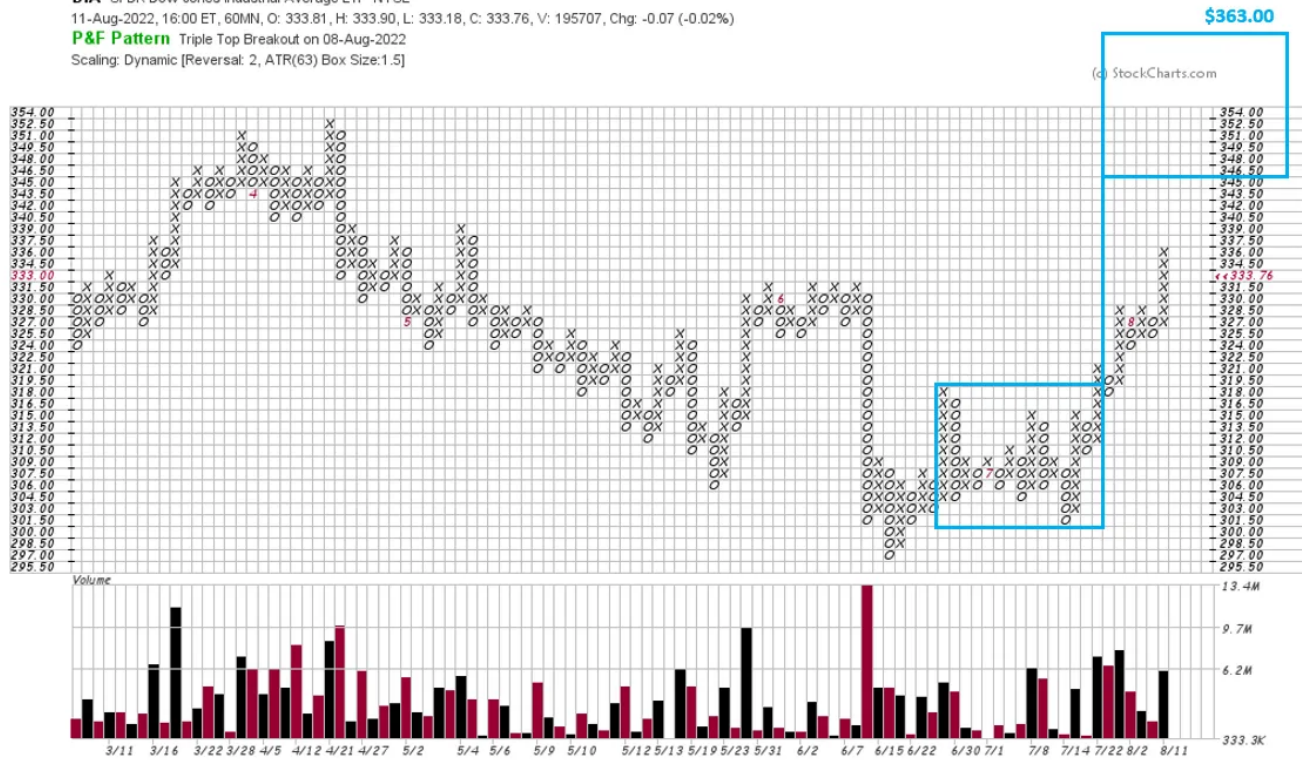
Dow Jones Industrial Average (DIA) is in markup with a minimum target of 3.8% higher from today's price.

DIA SPDR Dow Jones Industrial Average ETF NYSE

11-Aug-2022, 16:00 ET, 60MN, O: 333.81, H: 333.90, L: 333.76, C: 333.76, V: 195707, Chg: -0.07 (-0.02%)

P&F Pattern Triple Top Breakout on 08-Aug-2022

Scaling: Dynamic [Reversal: 2, ATR(63) Box Size:1.5]



Small Caps (IWM) are in markup with a minimum target of 4.9% higher from today's price.

IWM iShares Russell 2000 ETF NYSE

11-Aug-2022, 16:00 ET, 60MN, O: 196.51, H: 196.63, L: 196.04, C: 196.39, V: 2308919, Chg: -0.115 (-0.06%)

P&F Pattern Ascending Triple Top Breakout on 10-Aug-2022

Scaling: Dynamic [Reversal: 2, ATR(63) Box Size:1.28]



Bonds

Bonds (TLT) appear to be in a trading range, possibly upward sloping, after a selling climax bottom set around \$109.00.

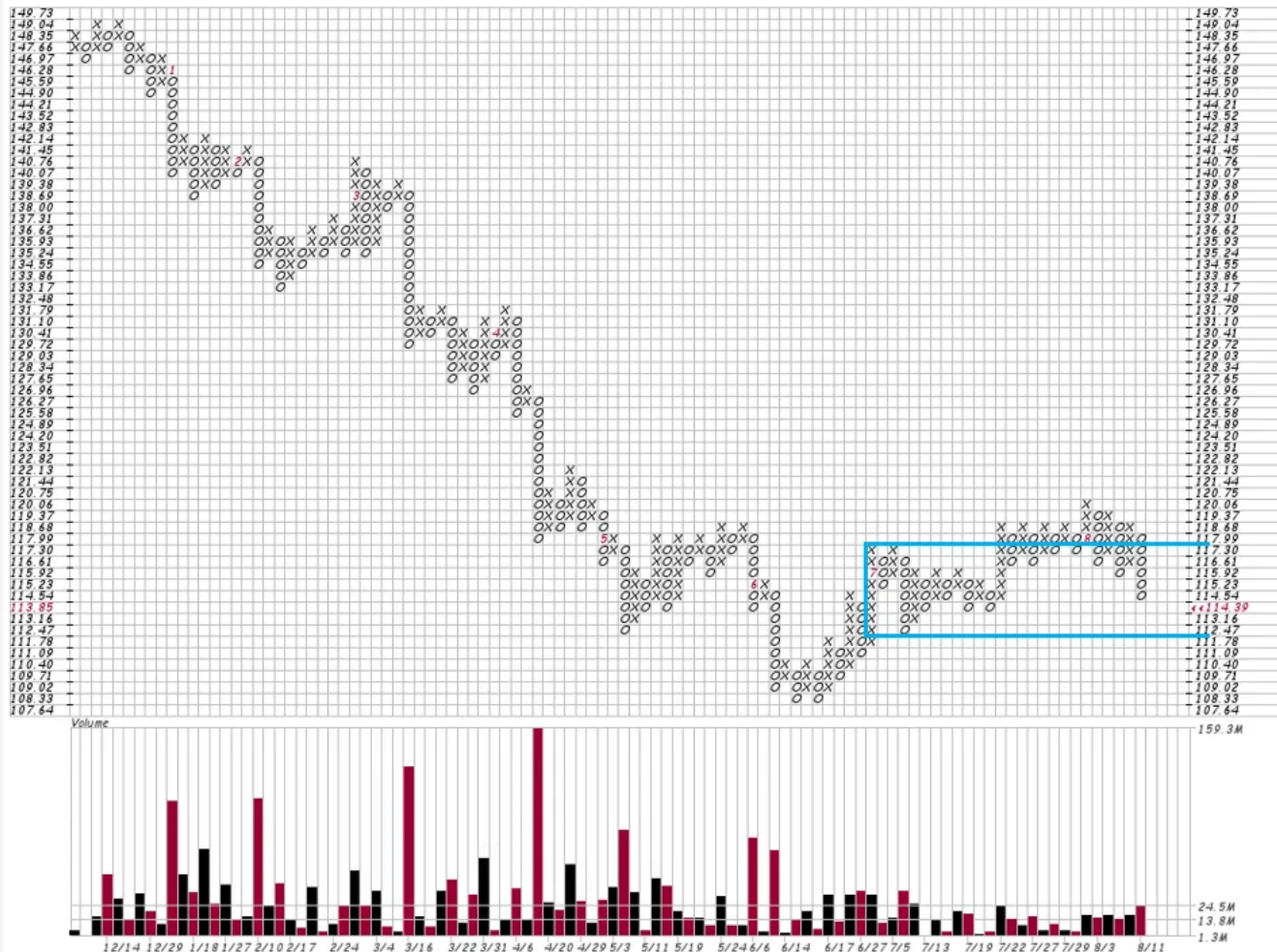
TLT iShares 20+ Year Treasury Bond ETF Nasdaq Global Mkt.

11-Aug-2022, 16:00 ET, 60MN, O: 114.37, H: 114.72, L: 114.29, C: 114.39, V: 3586835, Chg: +0.02 (0.02%)

P&F Pattern Descending Triple Bottom Breakdown on 11-Aug-2022

Scaling: Dynamic [Reversal: 2, ATR(63) Box Size: 0.69]

(c) StockCharts.com



Commodities

Commodities (DBC) appear to be in a trading range after a bearish change of behavior from the \$30.60 high to the \$24.48 low.

DBC Invesco DB Commodity Index Tracking Fund NYSE

11-Aug-2022, 16:00 ET, 60MN, O: 26.225, H: 26.23, L: 26.18, C: 26.23, V: 2015010, Chg: +0.00 (0.00%)

P&F Pattern Ascending Triple Top Breakout on 10-Aug-2022

Scaling: Dynamic [Reversal: 2, ATR(63) Box Size:0.18]

(c) StockCharts.com

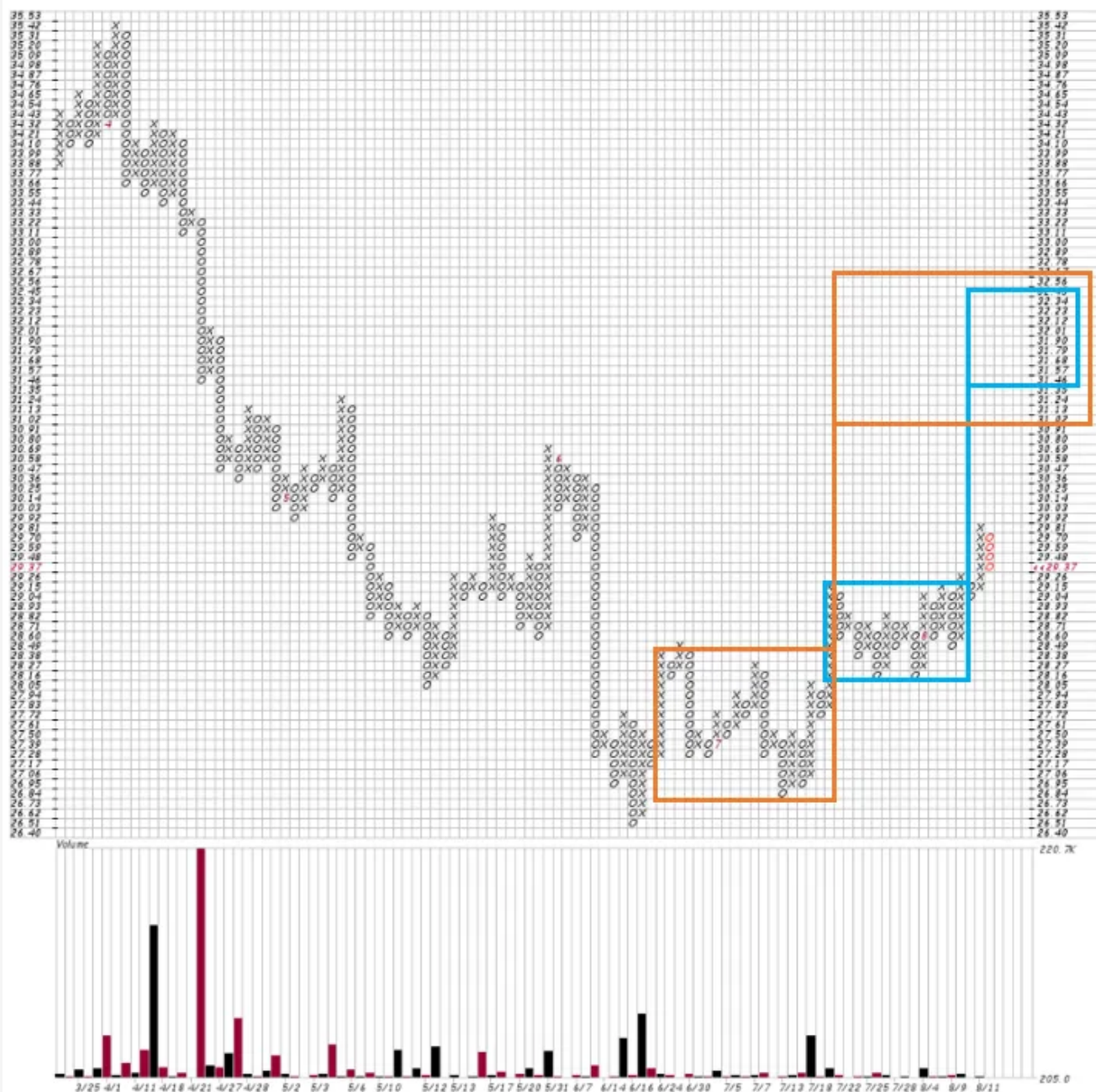


Sector & Stock Spotlight

Communication Services (EWCO) has confirming counts higher to \$31.46; ~7.1% higher from today's price.

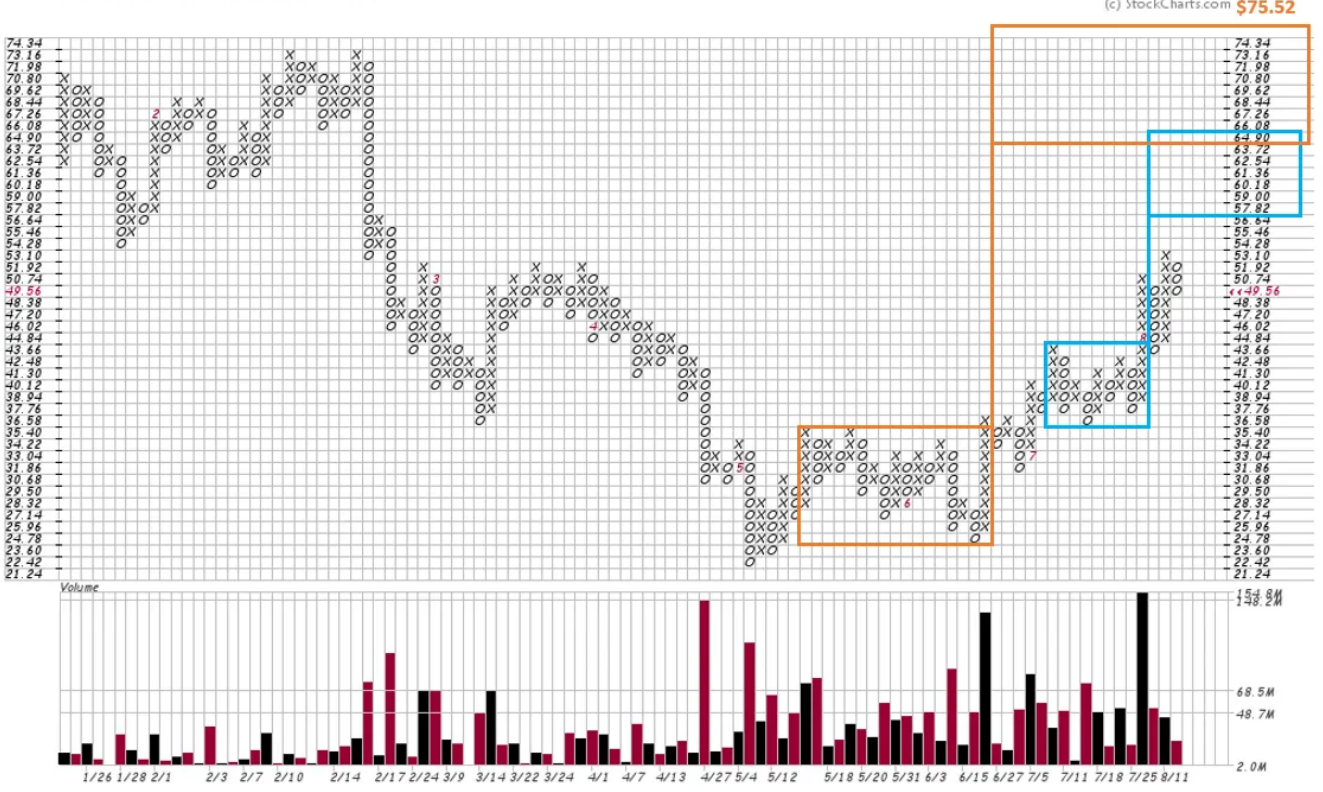
EWCO Invesco S&P 500 Equal Weight Communication Services ETF AMEX
 11-Aug-2022, 16:00 ET, 60MN, O: 29.31, H: 29.31, L: 29.31, C: 29.371, V: 400, Chg: -0.339 (-1.14%)
P&F Pattern High Pole Warning on 11-Aug-2022
 Scaling: Dynamic [Reversal: 2, ATR(63) Box Size: 0.11]

[c] StockCharts.com



Roblox Corp (**RBLX**) has confirming counts higher to \$64.90; ~31% higher from today's price.

RBLX Roblox Corporation NYSE
11-Aug-2022, 16:00 ET, 60MN, O: 49.50, H: 49.98, L: 49.56, V: 3628367, Chg: +0.059 (0.12%)
No recent chart pattern found
Scaling: Dynamic [Reversal: 2, ATR(63) Box Size:1.18]



Type your email...

Subscribe

We are not registered as a securities broker-dealer or an investment adviser either with the U.S. Securities and Exchange Commission (the “SEC”) or with any state securities regulatory authority. We are neither licensed nor qualified to provide investment advice. Any individual who chooses to invest in any securities should do so with caution. Investing in securities is speculative and carries a high degree of risk; you may lose some or all of the money that is invested. Always research your own investments and consult with a registered investment advisor or licensed stock broker before investing. Past performance is not indicative of future results. To the fullest extent of the law, we will not be liable to any person or entity for the quality, accuracy, completeness, reliability, or timeliness of the information provided in this website, or for any direct, indirect, consequential, incidental, special or punitive damages that may arise out of the use of information we provide to any person or entity (including, but not limited to, lost profits, loss of opportunities, trading losses, and damages that may result from any inaccuracy or incompleteness of this information).

Comments

Write a comment...

© 2022 Marcus Aurelius · [Privacy](#) · [Terms](#) · [Collection notice](#)
[Substack](#) is the home for great writing